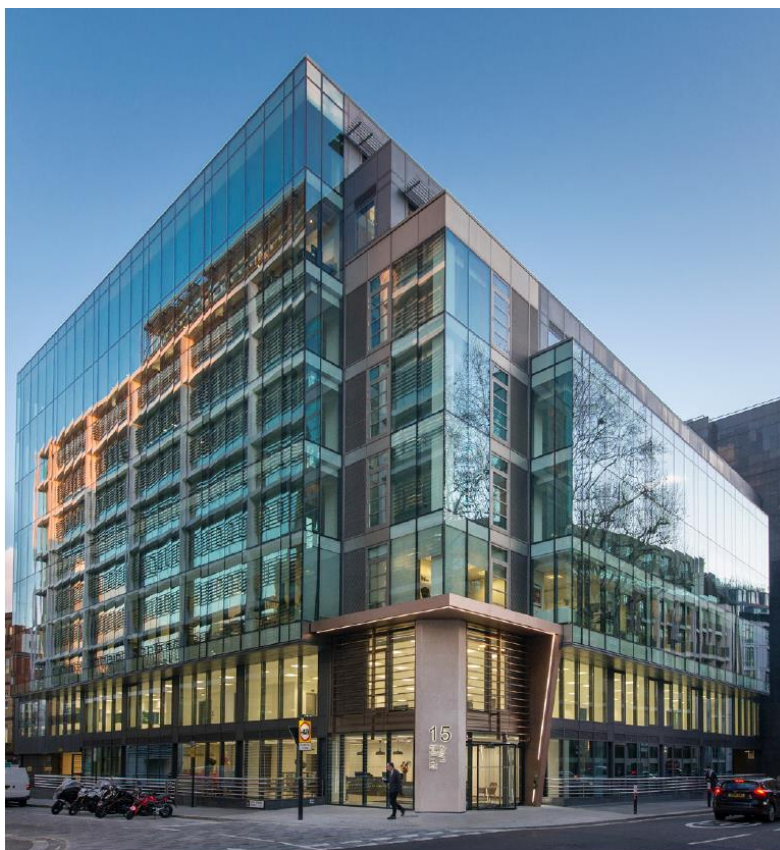


15 Fetter Lane

London, EC4

GRADE A OFFICE SPACE TO LET

5,593 – 16,177 SQ FT AVAILABLE NOW



DESCRIPTION

15 Fetter Lane is centrally located between the West End and the City of London, close to the Law Courts. The building occupies a prominent position on the eastern side of Fetter Lane adjacent to New Street Square.

The property benefits from excellent local amenities and public transport with Blackfriars (Circle and District lines) and Chancery Lane (central line) underground stations and City Thameslink over ground station and Farrington Crossrail (2019) all within a short walk.

The building provides c.60,000 sq ft of comprehensively refurbished space, including the reception, showers and changing rooms as well as new bike racks. The 7th floor benefits from terraces with fantastic views.

AMENITIES

- Newly refurbished to CAT A
- New reception
- Terrace on Level 7
- VRF air conditioning
- Metal tiled suspended ceiling
- LG7 lighting
- 2.6m floor to ceiling height
- 100mm raised floor
- 3 x 10 person passenger lifts
- Car parking
- New cycle and shower facilities

CONTACTS

Simon Conie

t: 020 7182 3403

m: 07702974333

e: simon.conie@cbre.com

Tom Meijer

t: 020 7182 2778

m: 07540 595 379

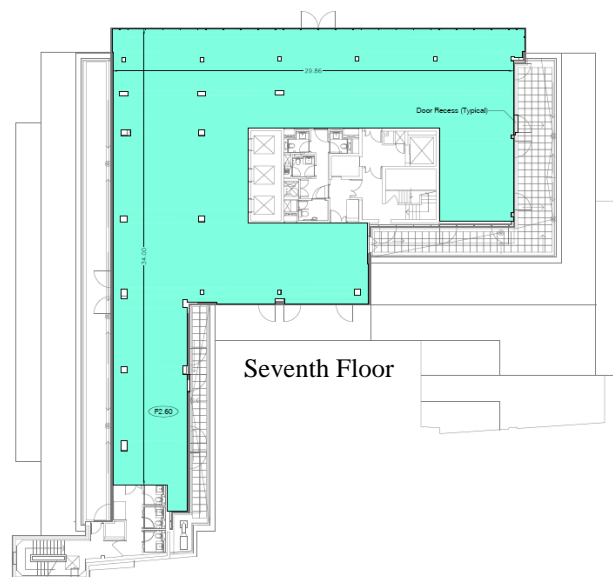
e: tom.meijer@cbre.com

15 Fetter Lane

London, EC4

GRADE A OFFICE SPACE TO LET

5,593 – 16,177 SQ FT AVAILABLE NOW



TENANCY

Floor	Area (sq ft)	Area (sq m)
7	5,593	520
1	10,584	983
Total	16,177	1,503

LOCATION

- Centrally located between the West End and the City of London
- Close to the Law Courts
- Adjacent to New Street Square

TERMS

- Lease: New leases direct from the landlord for a term by arrangement.
- Guide rents: Level 7: £72.50 per sq ft pa
Level 1: £65.00 per sq ft pa
- Rates: est. £22.00 per sq ft (y.e 2020)
- Service charge: est. £10.75 per sq ft

CONTACTS

Simon Conie

t: 020 7182 3403

m: 07702974333

e: simon.conie@cbre.com

Tom Meijer

t: 020 7182 2778

m: 07540 595 379

e: tom.meijer@cbre.com

CBRE Limited on its behalf and for the Vendors or Lessors of this property whose Agents they are, give notice that:

- These particulars are set out as a general outline only for guidance to intending Purchasers or Lessees, and do not constitute any part of an offer or contract.
- Details are given without any responsibility and any intending Purchasers, Lessees or Third Parties should not rely on them as statements or representations of fact, but must satisfy themselves by inspection or otherwise as to the correctness of each of them.
- No person in the employment of CBRE Limited has any authority to make any representation or warranty whatsoever in relation to this property.
- Unless otherwise stated, all prices and rents are quoted exclusive of VAT. Subject to contract, April 2019.