

ALDERMARY HOUSE

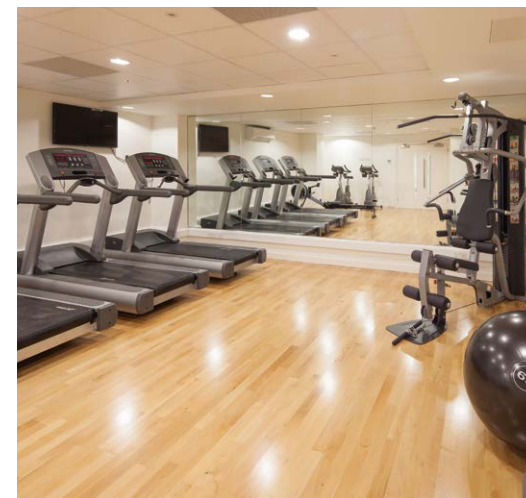
10 – 15 Queen Street, London EC4



Accommodation

Aldermary House has recently been fully refurbished to provide Grade A office accommodation in the heart of the City. The 8th floor provides 4,794 sq ft of flexible, well configured space, with excellent views over the City and an abundance of natural light.

Clockwise from top: Reception; entrance; in-house tenant gym



Amenities

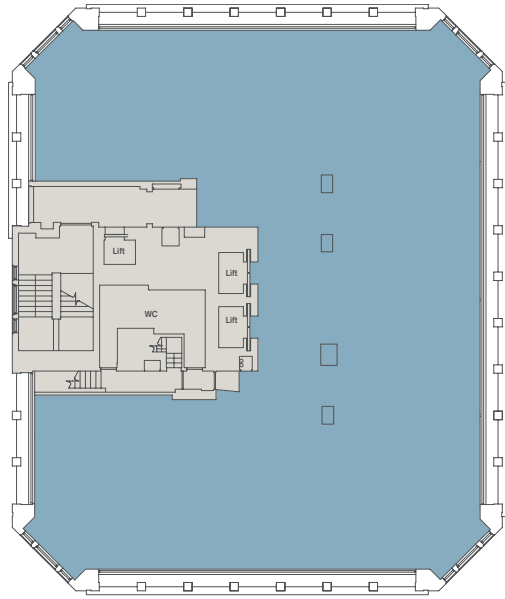
- Remodelled double height reception
- VRF air conditioning
- New suspended metal tile ceilings
- New LG7 compliant lighting
- New lifts (2 x 13 persons and goods lift)
- New male, female and disabled WCs
- New tenant gym
- 4 x showers
- Basement storage
- Secure cycle storage and lockers/ changing facilities
- On-site building manager and a receptionist

Availability

8th floor

Floor plan

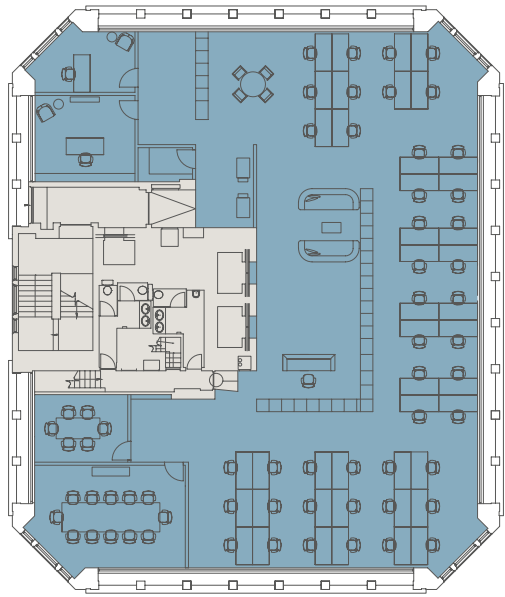
4,794 sq ft / 445.4 sq m



8th floor

Space plan

4,794 sq ft / 445.4 sq m



Key

- Office
- Core

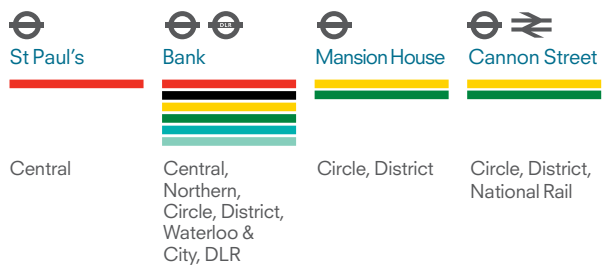
Plans are not to scale. For indicative purposes only.



Opposite page, clockwise from top: actual view east; actual view west; actual view north-east; actual view west

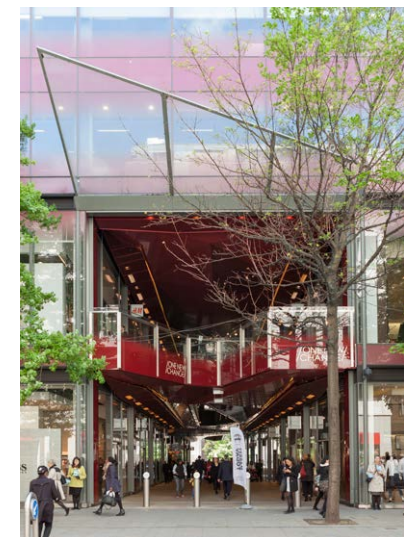
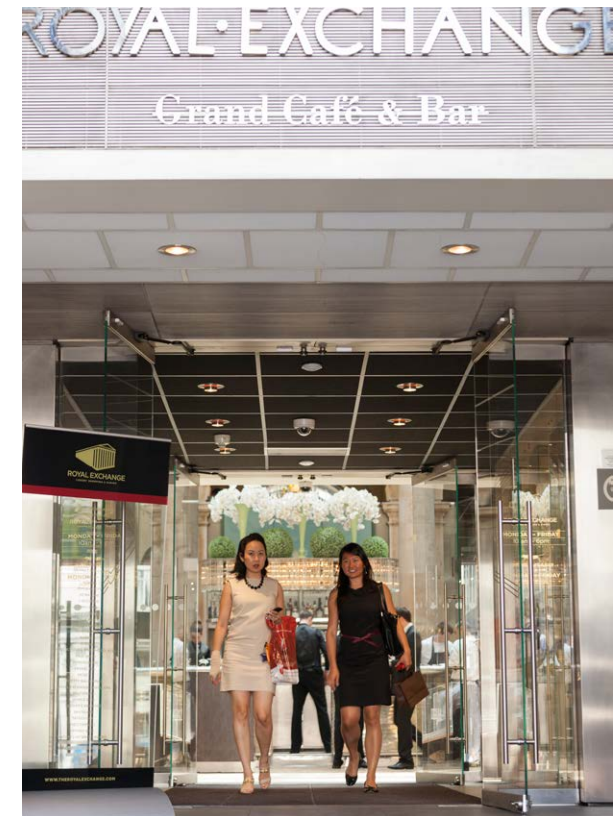


Transport



Amenities

1 Bow Lane	2 Cheapside	3 One New Change
Retail TM Lewin Roderick Charles Jigsaw Joseph Cheaney Bow Lane Dental Group	Retail SPACE.NK Tesco Ted Baker Kuoni Abercrombie & Kent	Retail Karen Millen Oliver Bonas LK Bennett Hobbs M&S Simply Food
Restaurants / Cafés Paul Bow Lane Wine Vaults Bar Remo Pret A Manger Taberna Etrusca	Restaurants / Cafés EAT Costa Starbucks Itsu Pret A Manger	Restaurants / Cafés Barbecoa Bread Street Kitchen Byron Wasabi Searcys – Champagne Bar Madison



EPC

Aldermay House has been given an Energy Performance Certificate rating of C

aldermayhouse.com

CBRE

Natalie Lelliott

020 7182 2507

07702 975 683

natalie.elliott@cbre.com

James Walker

020 7182 3216

07713 256 677

james.walker@cbre.com

INGLEBY TRICE

Tom Lowe

020 7029 3617

07739 735 256

t.lowe@inglebytrice.co.uk

Malcolm Trice

020 7029 3612

07860 305 024

m.trice@inglebytrice.co.uk

Misrepresentation Act: Ingleby Trice and CBRE for themselves and for the vendors or lessors of this property whose agents they are give notice that: (1) the particulars are set out as a general outline only for the guidance of intending purchasers or lessees and do not constitute part of an offer or contract; (2) all descriptions, dimensions, references to condition and necessary permissions for use and occupation and their details are given in good faith and are believed to be correct but any intending purchasers or tenants should not rely on them as statements or representations of fact, but must satisfy themselves by inspection or otherwise as to the correctness of each item; (3) no person in the employment of Ingleby Trice and CBRE has any authority to make or give any representation or warranty whatever in relation to this property or these particulars nor enter into any contract relating to the property on behalf of Ingleby Trice and CBRE nor any contract on behalf of the vendor; (4) no responsibility can be accepted for any expenses incurred by intending purchasers or lessees in inspecting properties which have been sold, let or withdrawn. November 2014.

Design by Stepladder. www.stepladderuk.com